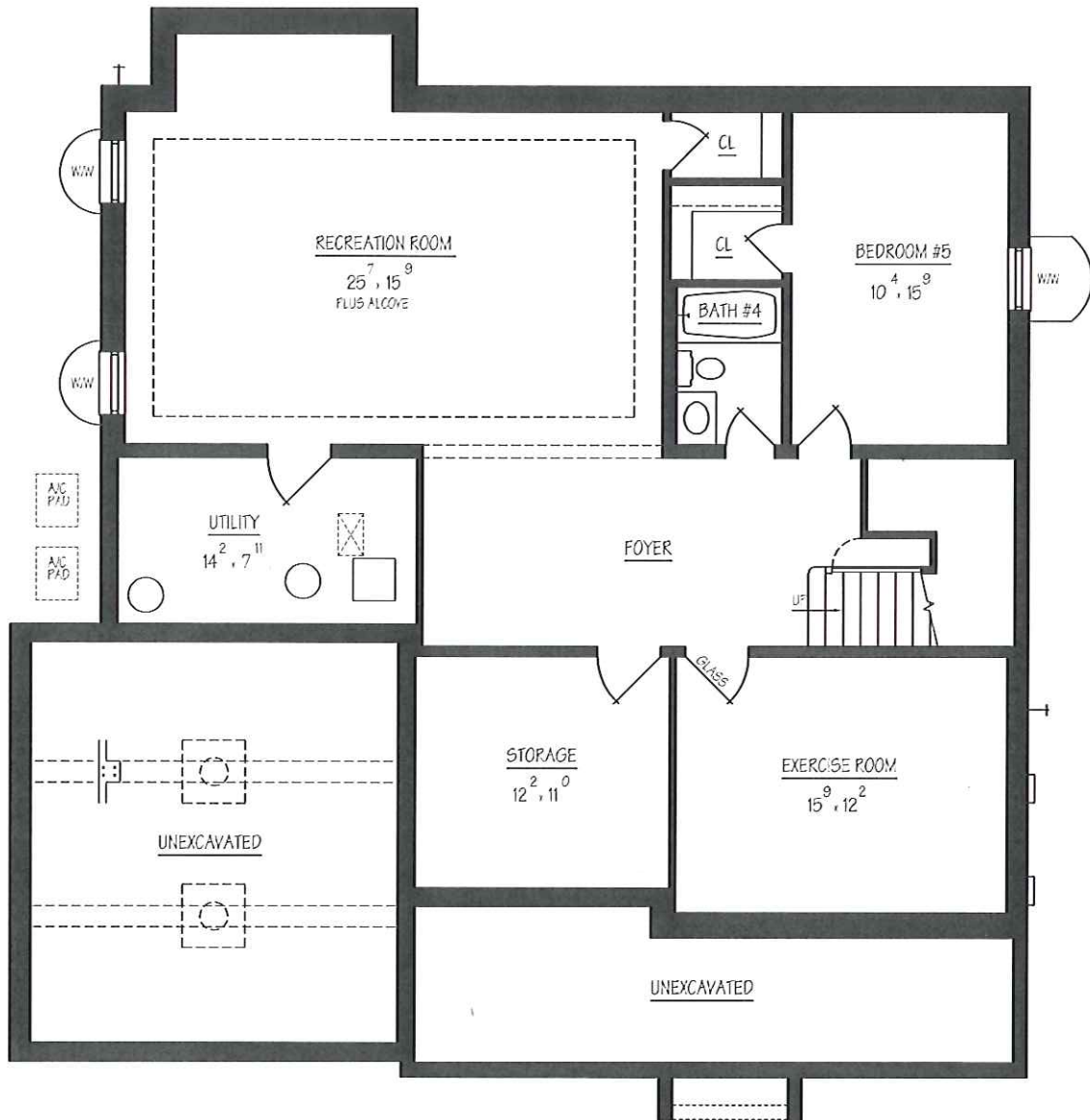


10411 HEBARD STREET  
 KENSINGTON, MD 20895



**D**ouglas  
**C**onstruction  
**G**roup

**BASEMENT FLOOR PLAN**

1240 SQ. FT. FINISHED  
 246 SQ. FT. UNFINISHED

RENDERING ONLY: PLANS MAY VARY



**CLAUDE C. LAPP**  
 — ARCHITECTS, LLC —  
 301-881-6856