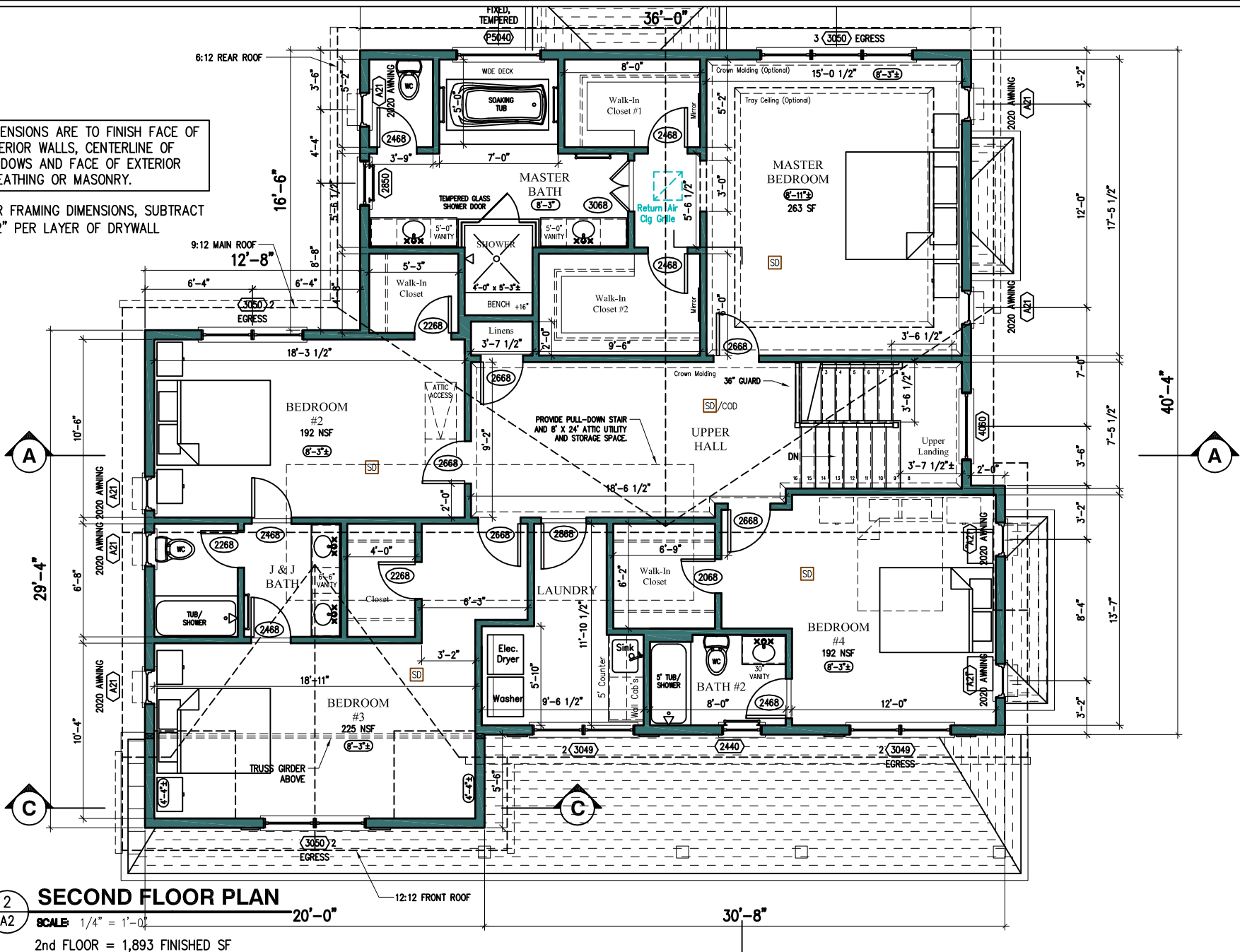


DIMENSIONS ARE TO FINISH FACE OF INTERIOR WALLS, CENTERLINE OF WINDOWS AND FACE OF EXTERIOR SHEATHING OR MASONRY.

FOR FRAMING DIMENSIONS, SUBTRACT 1/2" PER LAYER OF DRYWALL



**2 SECOND FLOOR PLAN**  
 SCALE: 1/4" = 1'-0"  
 2nd FLOOR = 1,893 FINISHED SF

**Douglas Mader, AIA**  
 11307 Rokeby Avenue, Garrett Park, MD 20896-0187  
 (301) 466-1378, DMaderAIA@aol.com

**8724 Bradmoor**  
 8724 Bradmoor Drive  
 Bethesda, MD 20817  
 Copyright 2018, ©Douglas Mader, AIA, Architect

**Design Development**  
**Second Floor Plan**

Job #:	18-33	Revisions:
Drawn by:	DDM	
Date:	12/28/18	

**dd5**  
 5 of 12